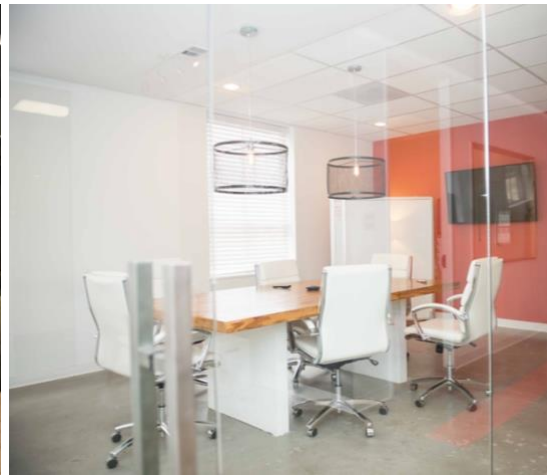


BUILDING FEATURES:

- Recently remodeled lobby and common areas
- Immediately Adjacent to DART Light Rail Station and M-Line Trolley
- Five On-Site Restaurants
- Attached parking garage via 3rd floor sky bridge
- Redundant Fiber
- Pacific Park coming soon
- \$14.91 per sq. ft. (Full-Service)



Office suites available for lease ranging 500 – 10,000 sq. ft.

