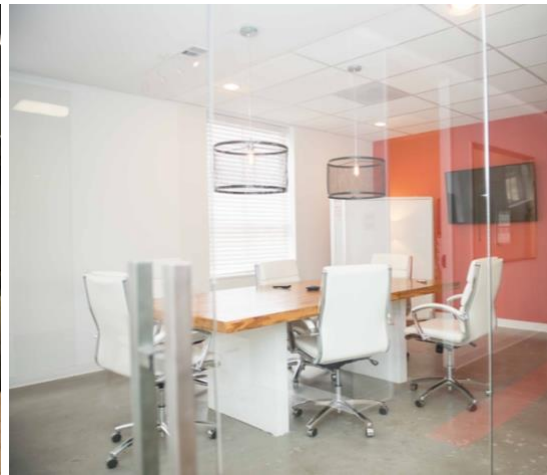


BUILDING FEATURES:

- On-Site Fitness Center
- On-Site Roof Top Amenity opening this Summer.
- Immediately Adjacent to DART Light Rail Station and M-Line Trolley
- Five On-Site Restaurants
- Attached parking garage via 3rd floor sky bridge
- Redundant Fiber
- Pacific Park coming soon
- \$15.00 per sq. ft. + E (\$16.80 Full-Service)



Office suites available for lease from 500 – 10,000 sq. ft.

